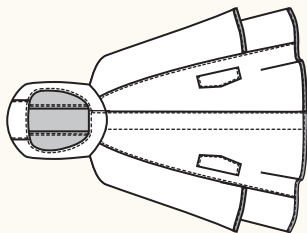


CYPRESS CAPE / 1 VIEW

FRONT

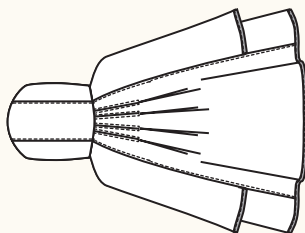


DESCRIPTION: Rain cape features hood, flap pockets and zip front closure with velcro. Add optional reflective piping along seamlines for extra visibility. Cape is unlined and all hems are bound with bias tape.

NOTIONS: Thread, 2 1/4" (60cm) separating zipper, 8" (20cm) piece of velcro tape cut into 1" (2.5cm) pieces, 8 yards (7.3m) of 1/2" (1.2cm) wide single fold bias tape. Optional: 4 yards (3.7m) reflective piping and additional bias tape.

RECOMMENDED FABRICS: Lightweight woven fabrics such as ripstop nylon and rainwear fabrics.

BACK



BODY MEASUREMENTS (inches)

	0	2	4	6	8	10	12	14	16	18	20
BUST	30	31	32	33	34 1/2	36	37 1/2	39	41	43	45
WAIST	24	25	26	27	28 1/2	30	31 1/2	33	35	37	39
HIP	36	37	38	39	40 1/2	42	43 1/2	45	47	49	51

FABRIC REQUIREMENTS (yards)

	0	2	4	6	8	10	12	14	16	18	20
59/60"	4	4	4	4	4	4	4	4	4	4	4

FINISHED MEASUREMENTS (inches)

BUST	34	35	36	37	38 1/2	40	41 1/2	43	45	47	49
HEM	79	80	81	82	83 1/2	85	86 1/2	88	90	92	94
LENGTH	27	27 1/2	27 3/4	28	28 1/2	28 3/4	29	29 1/2	29 3/4	29 1/2	29 1/2

BODY MEASUREMENTS (centimetres)

	0	2	4	6	8	10	12	14	16	18	20
BUST	76	79	81	84	88	91	95	99	104	109	114
WAIST	61	64	66	69	72	76	80	84	89	94	99
HIP	91	94	97	99	103	107	110	114	119	125	130

FABRIC REQUIREMENTS (metres)

	0	2	4	6	8	10	12	14	16	18	20
150cm	3.7	3.7	3.7	3.7	3.7	3.7	3.7	3.7	3.7	3.7	3.7

FINISHED MEASUREMENTS (centimetres)

BUST	86	89	91	94	98	102	105	109	114	119	124
HEM	201	203	206	208	212	216	220	224	229	234	239
LENGTH	69	69	70	70	71	72	72	73	74	74	75