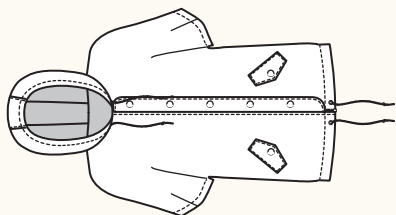


SEYMOUR JACKET / 1 VIEW

FRONT



DESCRIPTION: Very loose-fitting, lined jacket features extended cap sleeves, drawstrings at hood and hem, and front flap pockets. Jacket closes with a centre front zipper and windflap with snaps.

NOTIONS: Thread, 1 yard (0.9m) interfacing, 24" (60cm) separating zipper, seven no-sew snaps (size 24), 3.5 yards (3.2m) draw cord. Optional: 4 draw cord ends.

RECOMMENDED FABRICS: Light to medium weight woven fabrics such as ripstop nylon, rainwear fabrics, cotton and cotton nylon blends. Lining: Lining fabrics or mesh.

BODY MEASUREMENTS (inches)

	0	2	4	6	8	10	12	14	16	18	20
BUST	30	31	32	33	34½	36	37½	39	41	43	45
WAIST	24	25	26	27	28½	30	31½	33	35	37	39
HIP	36	37	38	39	40½	42	43½	45	47	49	51

FABRIC REQUIREMENTS (yards)

	0	2	4	6	8	10	12	14	16	18	20
59/60"	2	2	2	2	2	2	2½	2½	2½	2½	2½
LINING 44/45"	2½	2½	2½	2½	2½	2½	2½	2½	2½	2½	2½

FINISHED MEASUREMENTS (inches)

BUST	48	49	50	51	52½	54	55½	57½	59½	61½	63½
HEM	44	45	46	47	48½	50	51½	53	55	57	59
LENGTH	25½	26	26½	26½	26½	27	27½	27½	27½	28	28½

BODY MEASUREMENTS (centimetres)

	0	2	4	6	8	10	12	14	16	18	20
BUST	76	79	81	84	88	91	95	99	104	109	114
WAIST	61	64	66	69	72	76	80	84	89	94	99
HIP	91	94	97	99	103	107	110	114	119	125	130

FABRIC REQUIREMENTS (metres)

	0	2	4	6	8	10	12	14	16	18	20
150cm	1.8	1.8	1.8	1.8	1.8	1.8	2.1	2.1	2.1	2.1	2.1
LINING 115cm	2.1	2.1	2.1	2.1	2.1	2.1	2.1	2.1	2.1	2.1	2.1

FINISHED MEASUREMENTS (centimetres)

BUST	122	124	127	130	133	137	141	146	151	156	161
HEM	112	114	117	119	123	127	131	135	140	145	150
LENGTH	65	66	67	67	68	69	70	70	71	71	72